

of 270 fathoms, lat. 72 31 S., long. 173° 39 E., "corallines, flustræ, and a variety of marine invertebrate animals came up in the net, showing an abundance and great variety of animal life. Amongst them I detected two species of *Pycnogonum*, *Idotea baffini*, hitherto considered peculiar to the Arctic

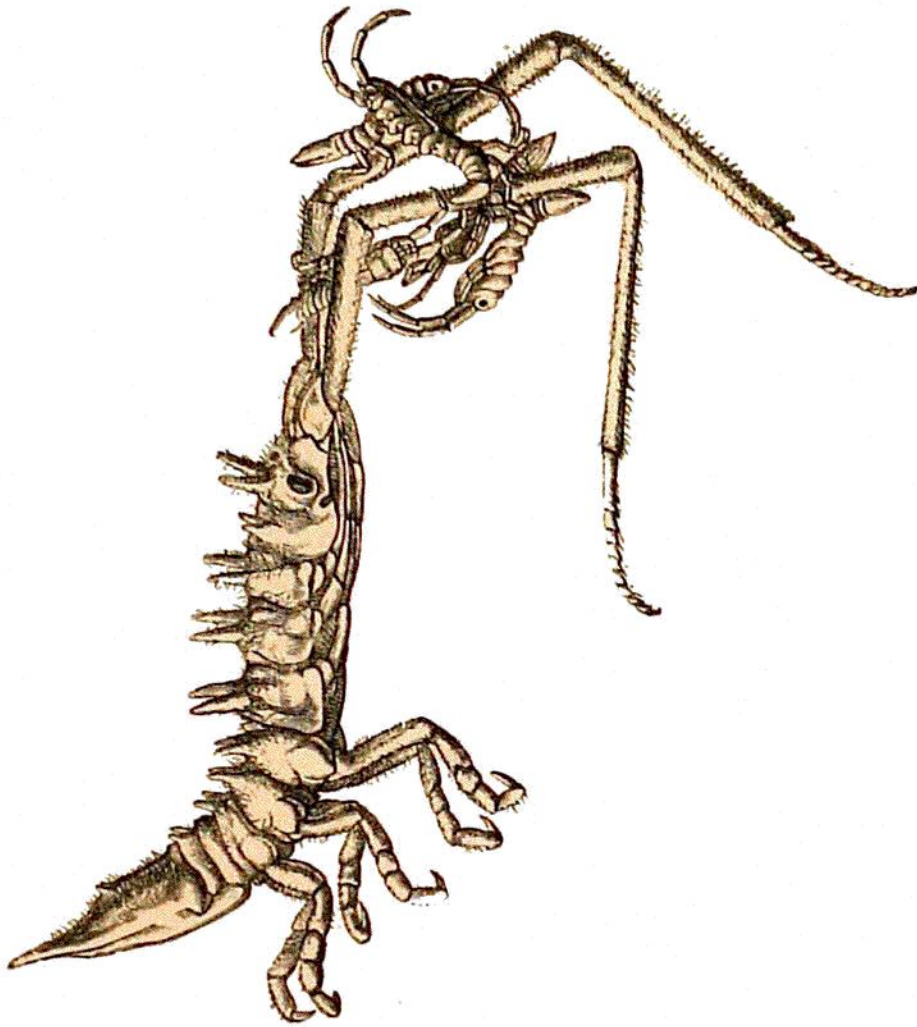


FIG. 21.—*Arcturus baffini*, SABINE. About the natural size. (No. 59.)

seas"—and some other forms. The figure represents *Arcturus baffini* and a few of its progeny, which however have got somewhat into disorder. The nursery arrangements are usually much more regular.

One or two species of the singular marine arachnida of the genus *Nymphon*, of a very large size, were