

Channel directly from the seas of the Loffotens where it abounds.

We dredged many Holothuriæ; notably everywhere below 200 or 300 fathoms the delicate little *Echinocucumis typica*, M. SARS; and *Psolus squamatus*, KOREN, which does not seem however to be common, through we dredged it in great profusion on one occasion in the 'Lightning,' its white scaly disks showing out against the smooth black pebbles of Færoe basalt to which they were attached. *Holothuria ecalcareia*, SARS, was met with occasionally, and formed another

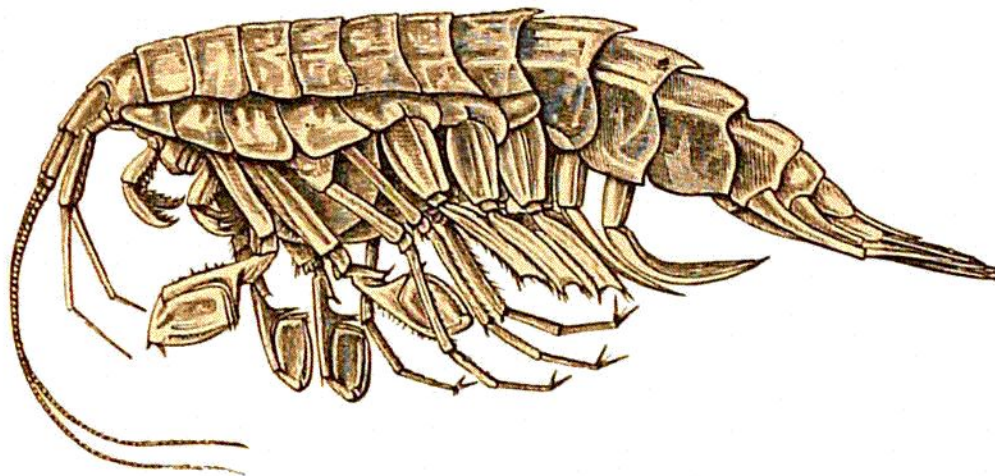


FIG. 18.—*Eusirus cuspidatus*, KROYER. (No. 55.)

interesting addition to the British fauna. It always had a peculiar effect coming up among a number of much smaller and more delicate things, like a massive German sausage twenty or thirty centimetres long.

In the characteristic hauls in the cold area we met with some very interesting crustaceans, one or two of which I figure as they are highly suggestive of the source of the cold water. They are some of the gigantic forms of amphipoda and isopoda of the Arctic sea.