

weather, off Valentia and between Valentia and Galway, at depths varying from 80 to 808 fathoms (Station 2), with a temperature at the latter depth of 5°·2 C. The general character of the fauna was that which we have hitherto been in the habit of regarding as Northern. Several interesting things were met with—*Nucula tumidula*, MALM.; *Leda frigida*, TORELL; *Verticordia abyssicola*, JEFFREYS; and *Siphonodentilium quinquangulare*, FORBES. Among the echinoderms a multitude of the large form of *Echinus norve-*

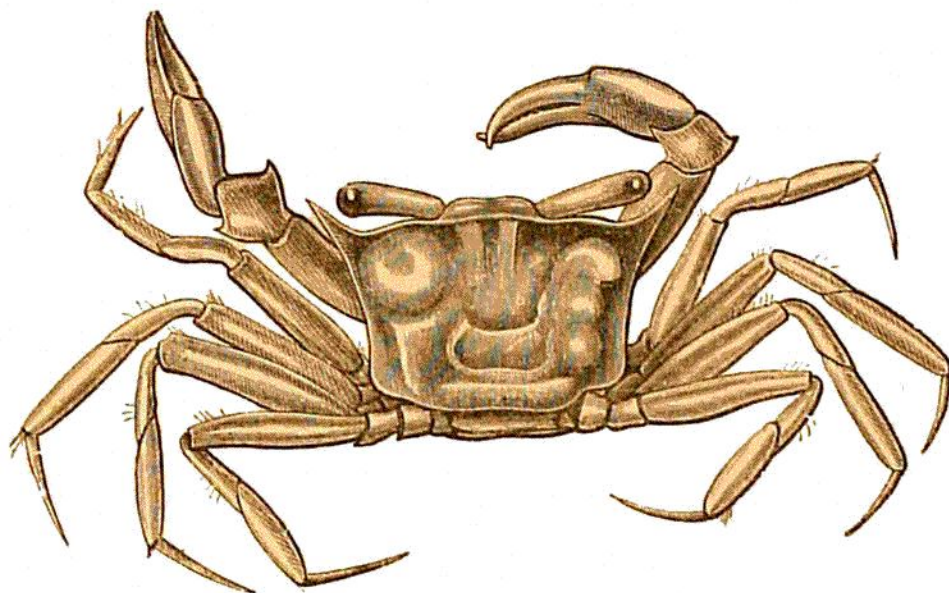


FIG. 8.—*Gonoplax rhomboides*, FABRICIUS. Young. Twice the natural size. (No. 3.)

*gicus*, D. and K., which I am now inclined to regard, along with several of its allies, as a mere variety of *E. flemingii*, BALL; and the fine asterid already mentioned, *Brisinga coronata*, G. O. SARS. Some interesting crustaceans, including *Gonoplax rhomboides*, FAB. (Fig. 8), a well-known Mediterranean species, and a young specimen of *Geryon tridens*, KROYER (Fig. 9), a rare Scandinavian form, and the only known North European brachyurous crustacean